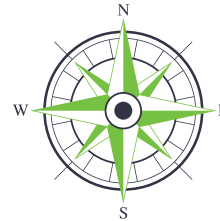
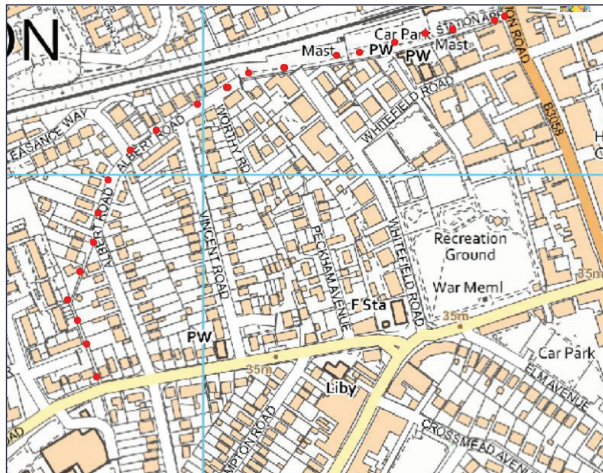
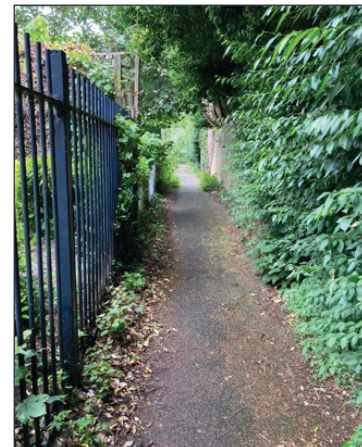
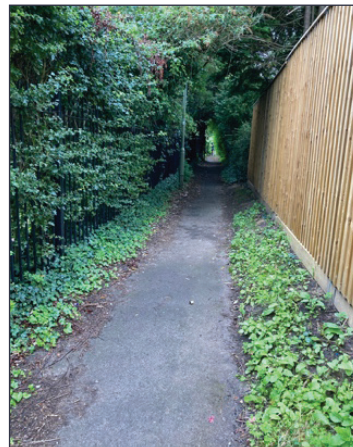


GR2 | Health & Leisure Centre to Rail Station (Part 1)

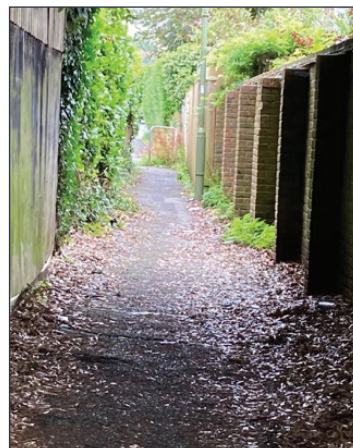
Map Overview



From Gore Road, enter the route by the pedestrian crossing from Arnewood School



Bear right at end of path towards Albert Road



Green Routes

GR2 | Health & Leisure Centre to Rail Station (Part 2)

As you exit the path, follow the same direction along Albert Road



Enter the path straight ahead - the railway line is to the left



Take steps on the left for the Station car park;
or continue to reach Station Road for level access to Station

